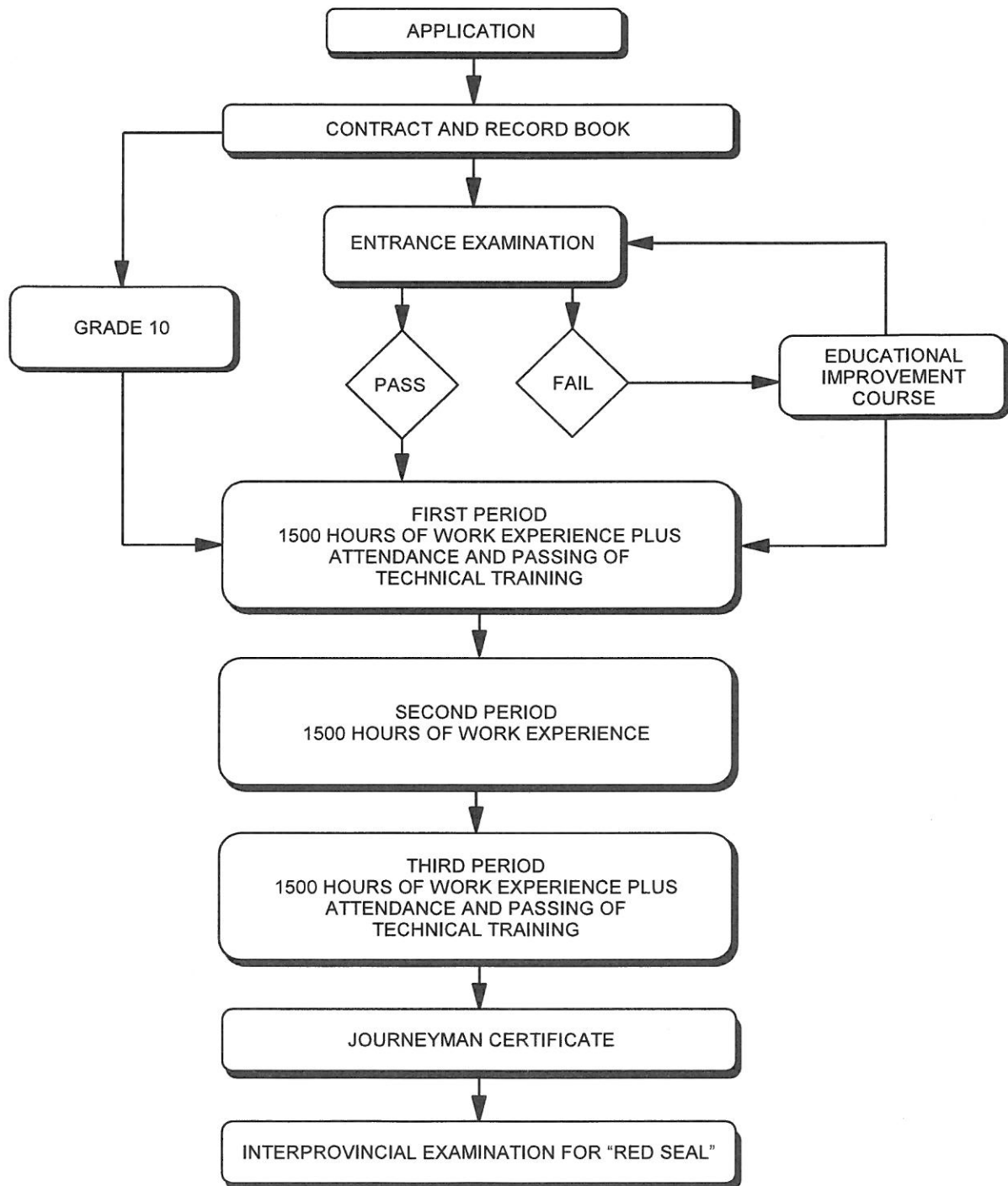


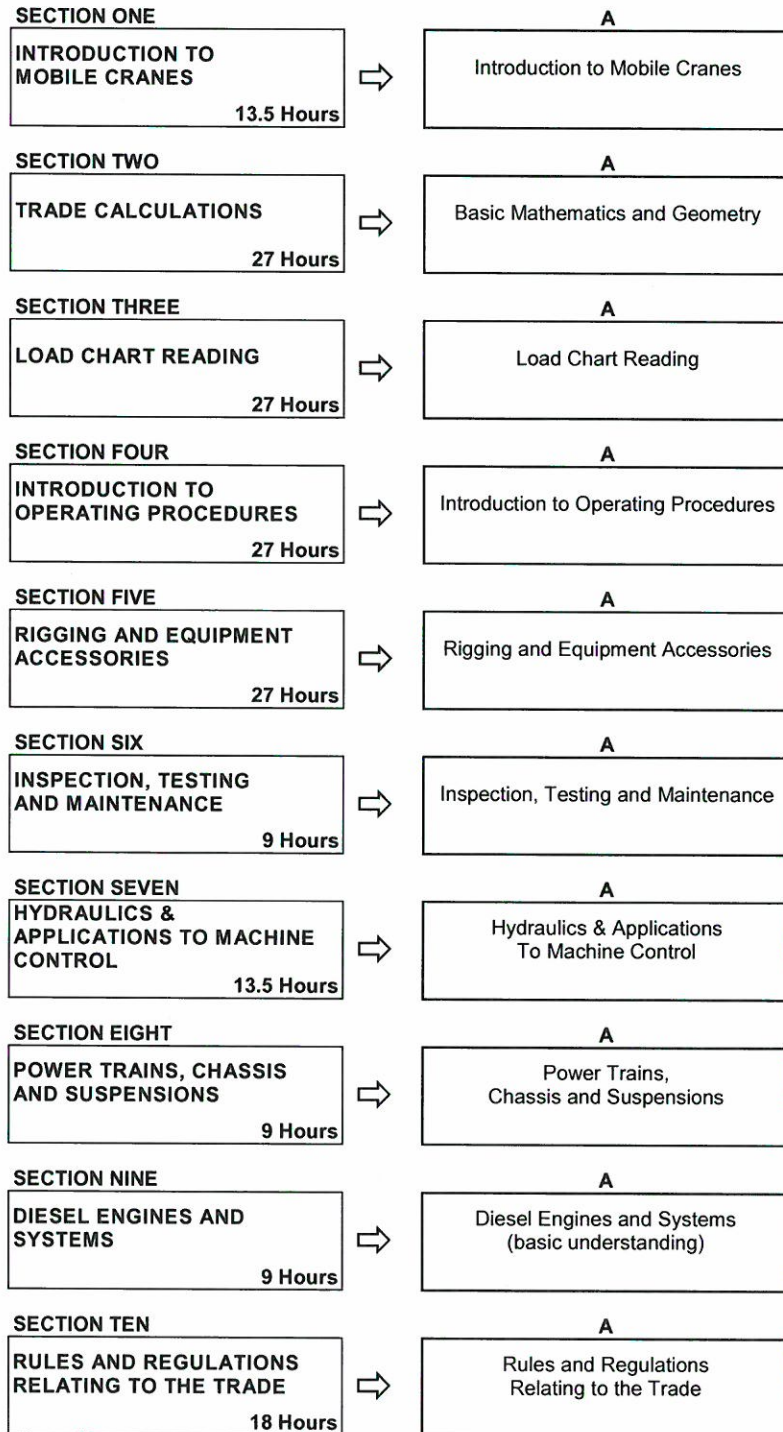
APPRENTICESHIP ROUTE TOWARD CERTIFICATION CRANE AND HOISTING EQUIPMENT OPERATOR - MOBILE CRANE OPERATOR



Crane and Hoisting Equipment Operator Mobile Crane Operator Training Profile

First Period

(6 Weeks 30 Hours Per Week - Total of 180 Hours)



Third Period

(6 Weeks 30 Hours Per Week - Total of 180 Hours)

SECTION ONE REVIEW OF MOBILE CRANES AND COMPONENTS 9 Hours	⇒	A Mobile Cranes and Components
SECTION TWO PRINCIPLES OF CRANE OPERATION 13.5 Hours	⇒	A Principles of Crane Operation
SECTION THREE LOADS CHARTS 27 Hours	⇒	A Loads Chart
SECTION FOUR OPERATING PROCEDURES 27 Hours	⇒	A Operating Procedures
SECTION FIVE INTRODUCTION TO PRE-LIFT PLANNING 27 Hours	⇒	A Pre-Lift Planning and Tasks
SECTION SIX ADVANCED RIGGING PROCEDURES 27 Hours	⇒	A Advanced Rigging
SECTION SEVEN INTRODUCTION TO NEW CRANES 13.5 Hours	⇒	A New Technology
SECTION EIGHT CONVENTIONAL CRANE DRAW-WORKS 13.5 Hours	⇒	A Conventional Drive Principles and Operation
SECTION NINE SPECIALISED LIFT ATTACHMENTS 9 Hours	⇒	A Attachments and Accessories
SECTION TEN MULTI-CRANE LIFTS 13.5 Hours	⇒	A Multi-crane Lifts

The hours stated are for guidance and should be adhered to as closely as possible. However, adjustments must be made for rate of apprentice learning, statutory holidays, registration and examinations for the training establishment and Apprenticeship and Industry Training.

